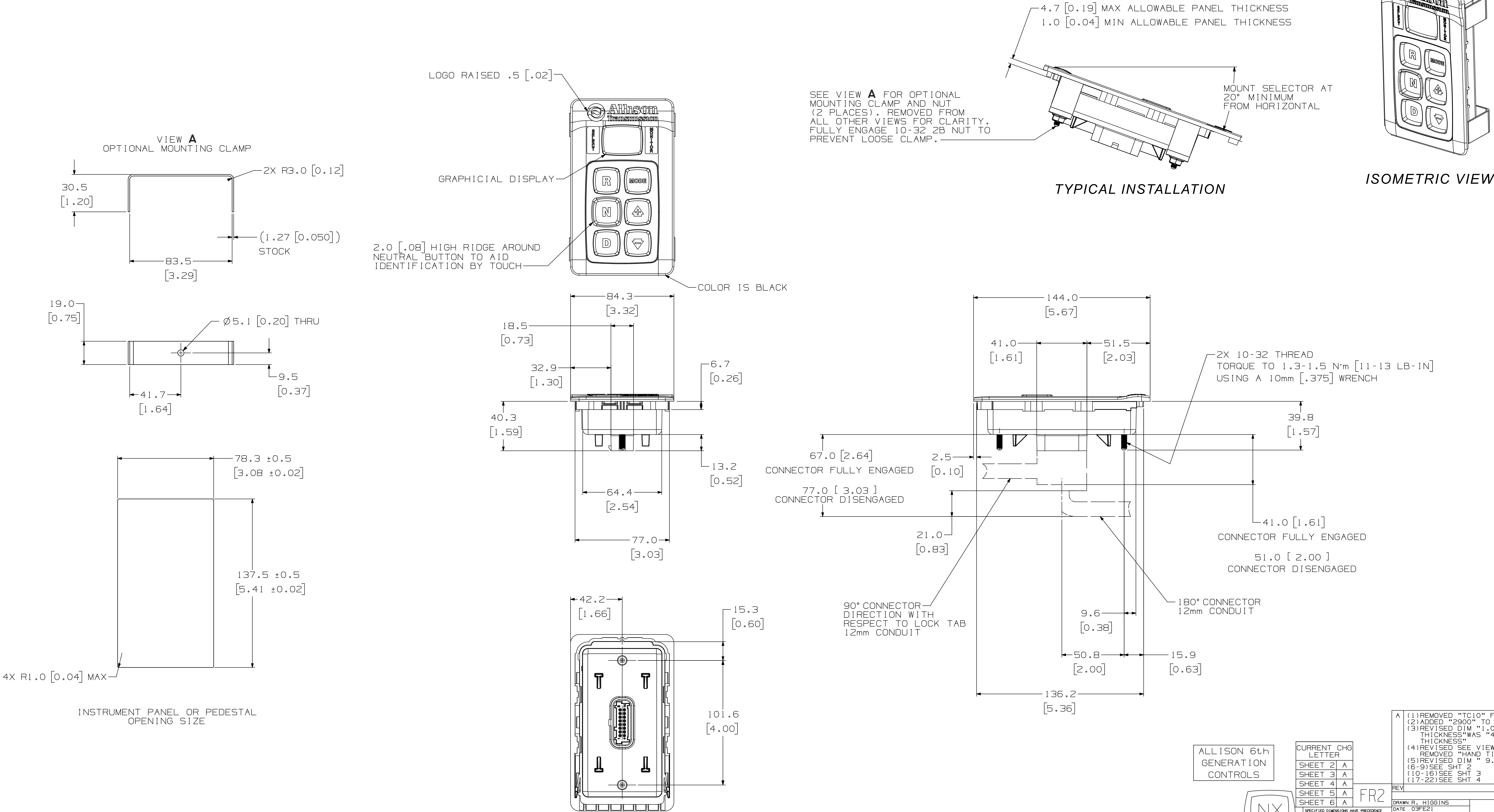


2900/3000/4000 PRODUCT FAMILIES
STANDARD PUSH BUTTON SHIFT SELECTOR



DIMENSIONS SHOWN IN [] BRACKETS ARE IN
INCHES, AND FOR REFERENCE ONLY

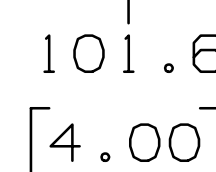
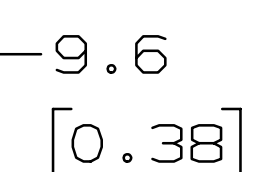
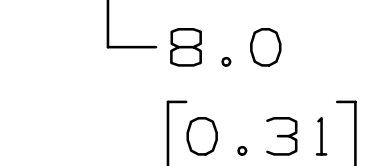
FOR WIRING INFORMATION, SEE SYSTEM SCHEMATIC DRAWINGS

FOR OPERATING DATA, REFER TO CONTROL SYSTEM DATA.

COMMON PUSH BUTTON SHIFT SELECTOR



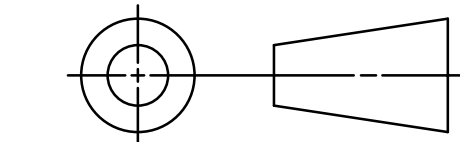
SEE VIEW **A** ON SHEET 1 FOR OPTIONAL
MOUNTING CLAMP AND NUT
(2 PLACES). REMOVED FROM
ALL OTHER VIEWS FOR CLARITY.
FULLY ENGAGE 10-32 2B NUT TO
PREVENT LOOSE CLAMP.



DIMENSIONS SHOWN IN [] BRACKETS ARE IN INCHES, AND FOR REFERENCE ONLY


FOR WIRING INFORMATION, SEE SYSTEM SCHEMATIC DRAWINGS

FOR OPERATING SPECIFICATIONS, REFER TO CONTROL SYSTEM DATA.

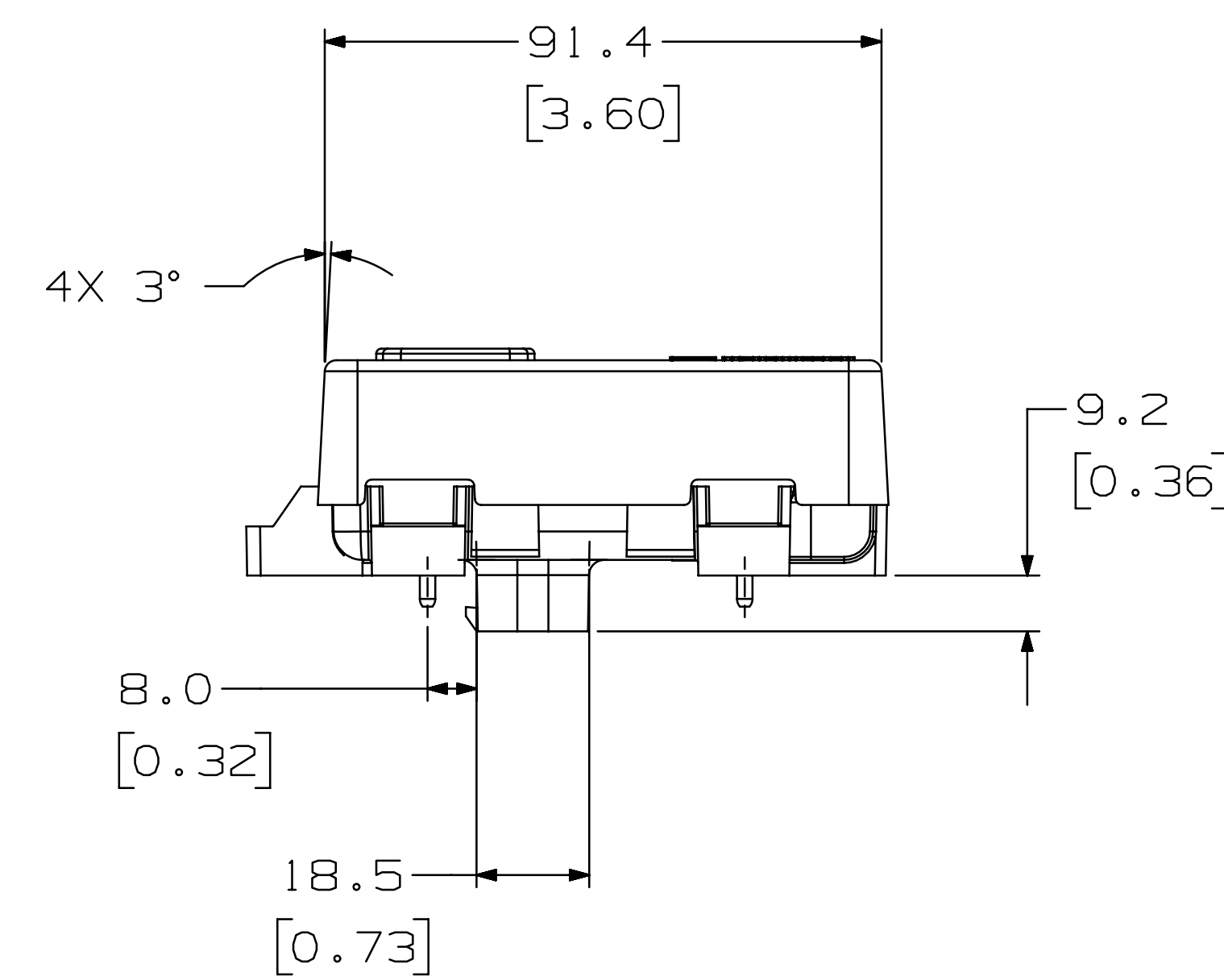


SH 2 THE INFORMATION CONTAINED HEREIN IS PROPRIETARY AND THE PROPERTY OF ALLISON TRANSMISSION, INC AND MAY NOT BE REPRODUCED, DISCLOSED OR USED FOR ANY PURPOSE OTHER THAN A QUOTATION TO OR ON ORDER FROM ALLISON TRANSMISSION, INC WITHOUT THE SPECIFIC WRITTEN AUTHORIZATION OF ALLISON TRANSMISSION, INC.

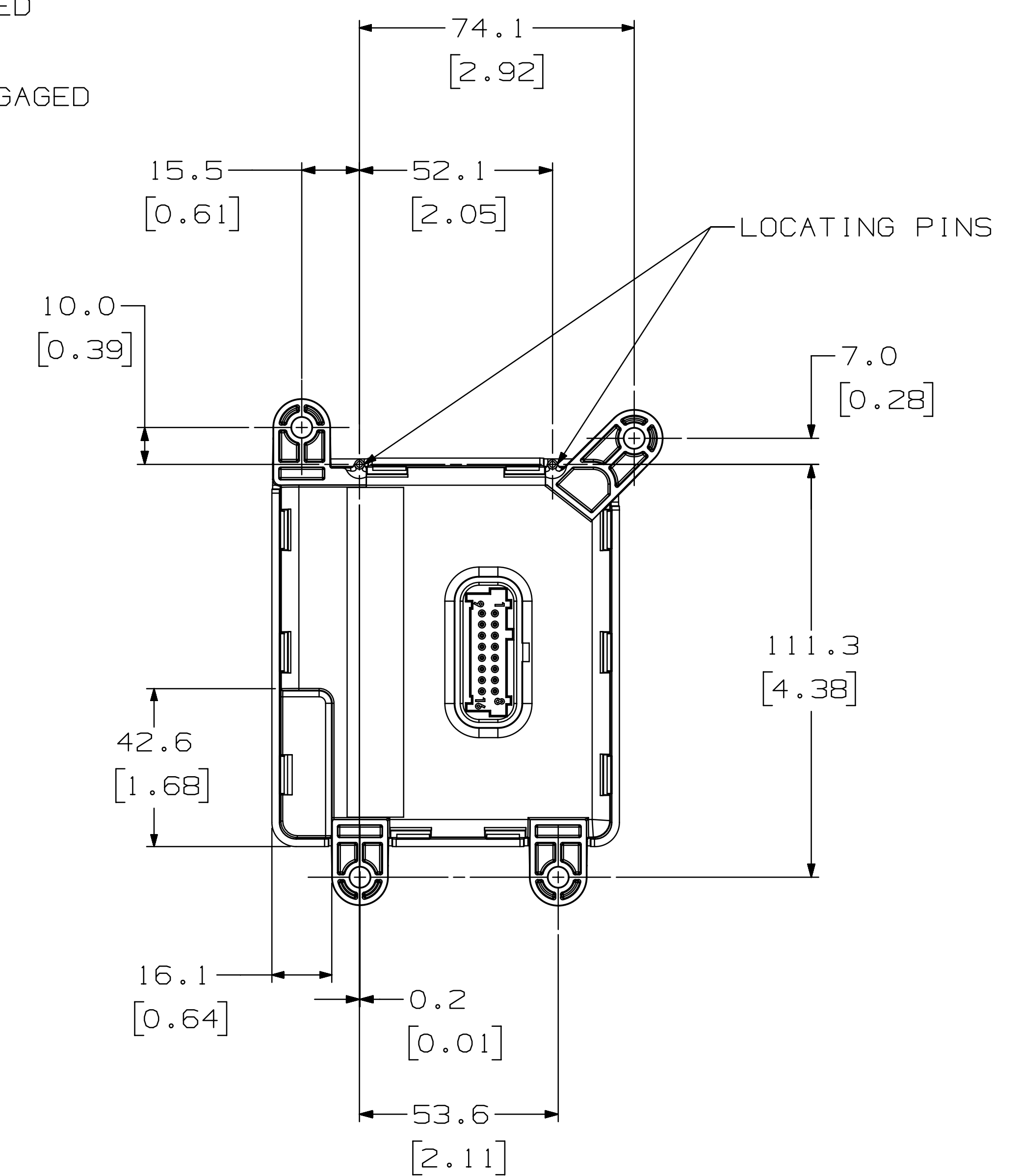
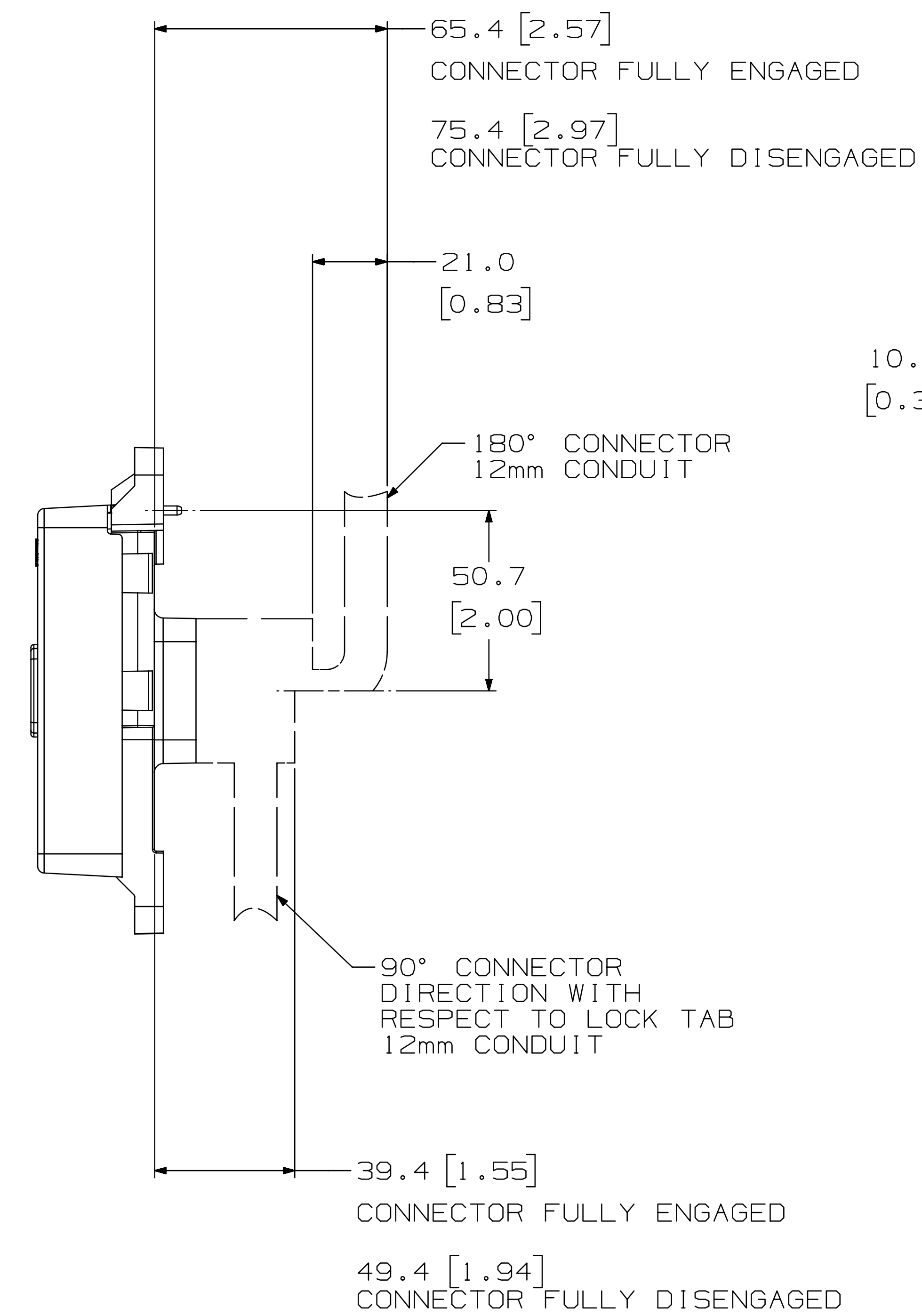
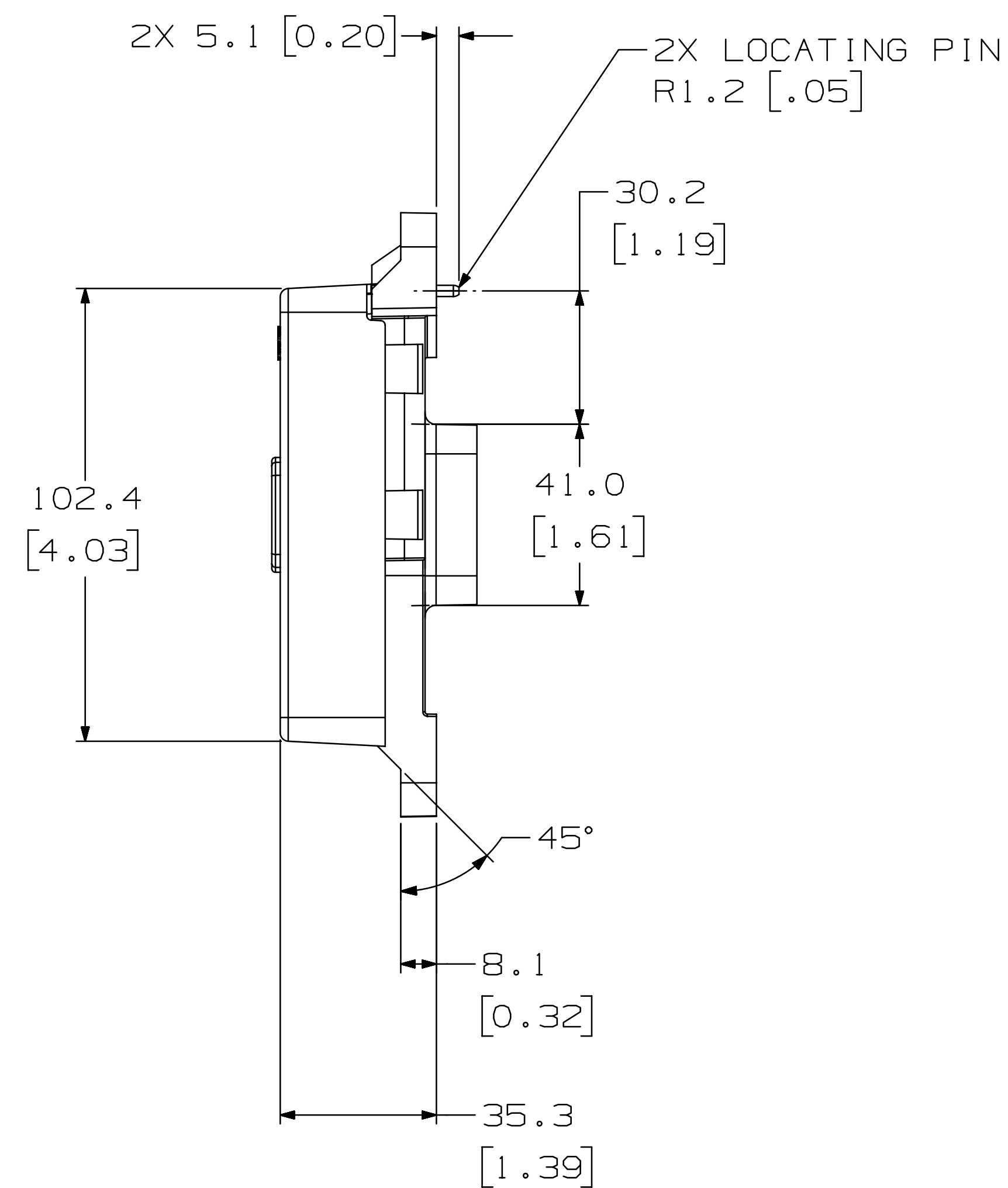
A (6)REVISED DIM "1.0 MIN -4.7 MAX ALLOWABLE PANEL THICKNESS" WAS "4.0±0.70 ALLOWABLE PANEL THICKNESS"
(7)REVISED SEE VIEW A FOR OPTIONAL MOUNTING..." REMOVED "HAND TIGHTEN ONLY."
(8)REVISED DIM "15.3(0.60)" WAS "116.9(4.60)"
(9)REVISED DIM "9.6(0.38)" WAS "15.9(0.63)"

REV	DESCRIPTION	19M721	PH	
	REVISIONS	DATE	DWG	
DRAWN R. HIGGINS	 Allison Transmission. Indianapolis, Indiana, USA			
DATE 03F02				
CHECKED C. EDMONDS				
DATE				
APPROVED T. BROWN		INSTL DWG-SELECTOR, SHIFT,		
DATE		6TH GEN		
PHILJ. ENGR. J. CHAILLE				
DATE				
APPL. ENGR.				
DATE				
	MODEL ALLISON 6th GENERATION CONTROLS			
	SIZE CAGE CODE	DWG NO		
	R 73342	AS07-617		
	SCALE 1/1	SHEET 2		

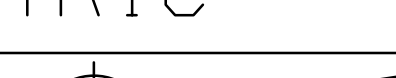
MOUNT SELECTOR AT
20° MINIMUM
FROM HORIZONTAL

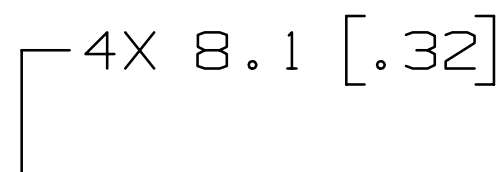
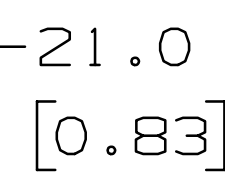
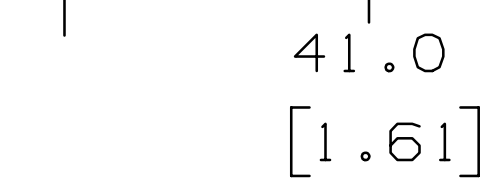
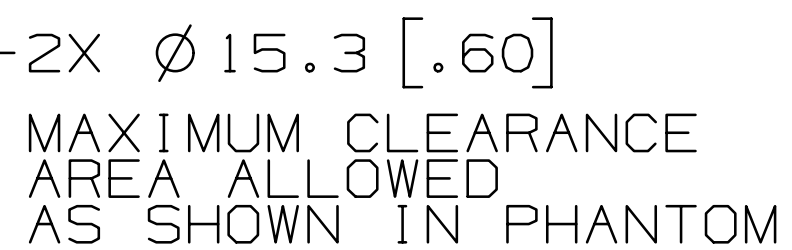
[illegible]

FOR OPERATING SPECIFICATIONS, REFER TO CONTROL SYSTEM DATA.




ALLISON 6th
GENERATION
CONTROLS

<div>NX</div>		FR2		REV	DESCRIPTION		DATE	DWG NO
		SPECIFIED DIMENSIONS HAVE PRECEDENCE OVER COMPUTER GENERATED DATA		DRAWN R. HIGGINS		ALLISON TRANSMISSION. Indianapolis, Indiana, USA		
CHANGE RESTRICTED				DATE 03F821				
METRIC				CHECKED C. EDMONDS				
				DATE				
THIRD ANGLE				APPROVED T. BROWN	INSTL DWG-SELECTOR, SHIFT, 6TH GEN			
				DATE				
				PROJ. ENGR. J. CHATLLE				
				DATE				
				APPL. ENGR.				
				DATE				
THE INFORMATION CONTAINED HEREIN IS PROPRIETARY AND THE PROPERTY OF ALLISON TRANSMISSION, INC. AND MAY NOT BE REPRODUCED, DISCLOSED OR USED FOR ANY PURPOSES OTHER THAN A QUOTATION TO OR ON ORDER FROM ALLISON TRANSMISSION, INC. WITHOUT THE SPECIFIC WRITTEN AUTHORIZATION OF ALLISON TRANSMISSION, INC.				MODEL ALLISON 6th GENERATION CONTROLS				
SH 3				SIZE CAGE CODE		DWG NO		
				R 73342		AS07-617		
				SCALE 1/1				SHEET 3
				CURRENT STATUS: RX-Released - EXP				



FOR OPERATING SPECIFICATIONS, REFER TO CONTROL SYSTEM DATA.

DWG
NO




THIRD ANGLE

THE INFORMATION CONTAINED HEREIN IS PROPRIETARY AND THE PROPERTY OF ALLISON TRANSMISSION, INC AND MAY NOT BE REPRODUCED, DISCLOSED OR USED FOR ANY PURPOSE OTHER THAN A QUOTATION TO OR ON ORDER FROM ALLISON TRANSMISSION, INC WITHOUT THE SPECIFIC WRITTEN AUTHORIZATION OF ALLISON TRANSMISSION, INC.

A	(17)REVISED 2X Ø15.3 DIM "PHANTOM" WAS "PHATOM"	
	(18)REVISED DIM "R5.45: WAS "7.63"	
	(19)REVISED DIM "18.5" WAS "18.4"	
	(20)REVISED DIM "41.0" WAS "40.9"	
	(21)REVISED DIM "16.3" WAS "16.4"	
	(22)REVISED DIM "0.60" WAS "0.16"	19MY21 RH JC

REV	
	DRAWN R. HIGGINS
	DATE 03FEZ!
	CHECKED C. EDMONDS

 Allison Transmission.
Indianapolis, Indiana, USA

INSTL DWG-SELECTOR, SHIFT, 6TH GEN

MODEL	ALLISON 6th GENERATION CONTROLS
-------	---------------------------------

SIZE	CAGE CODE	DWG NO
------	-----------	--------

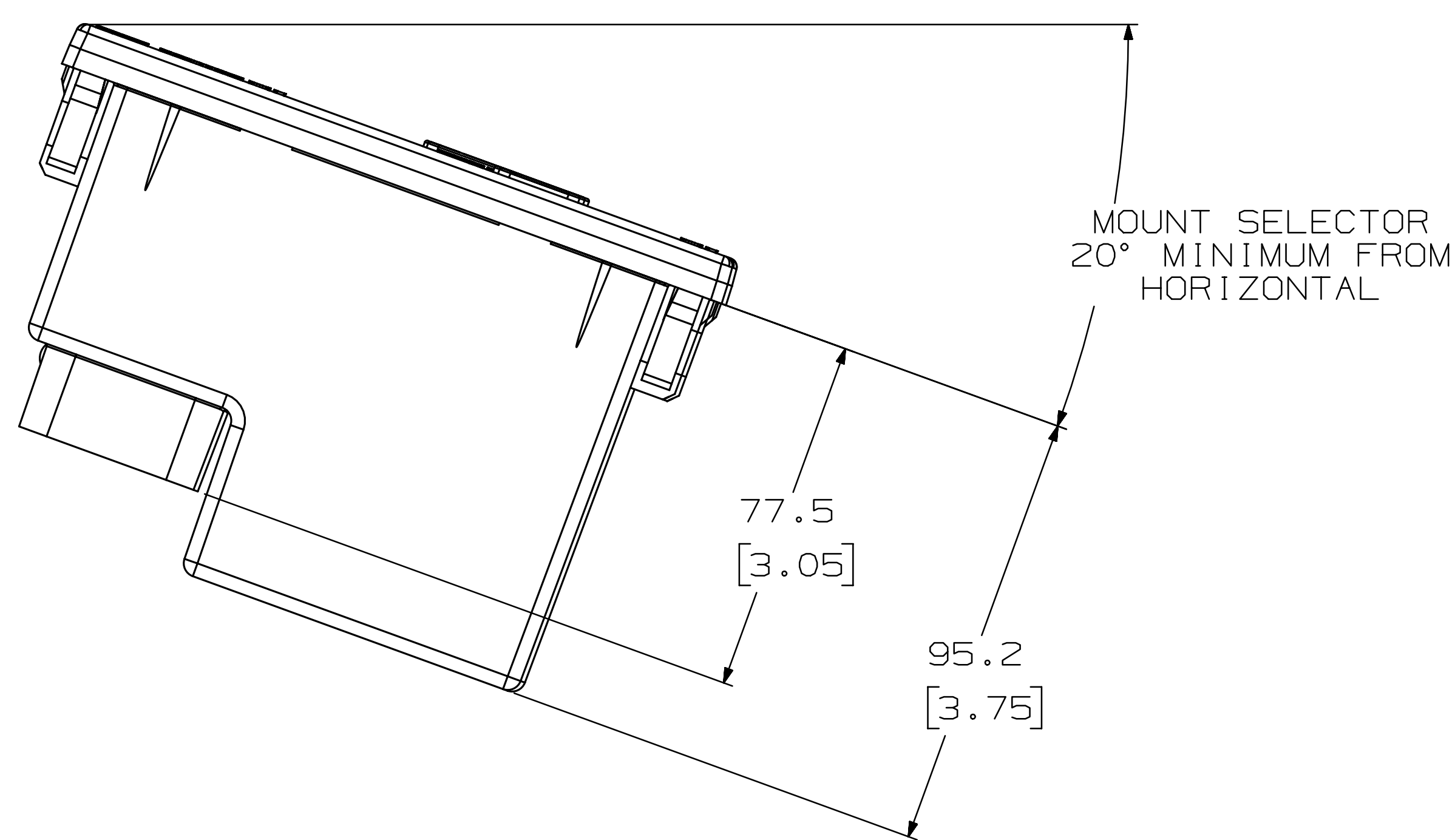
R	73342	AS07-617
---	-------	----------

SCALE 1/1	SHEET 4
-----------	---------

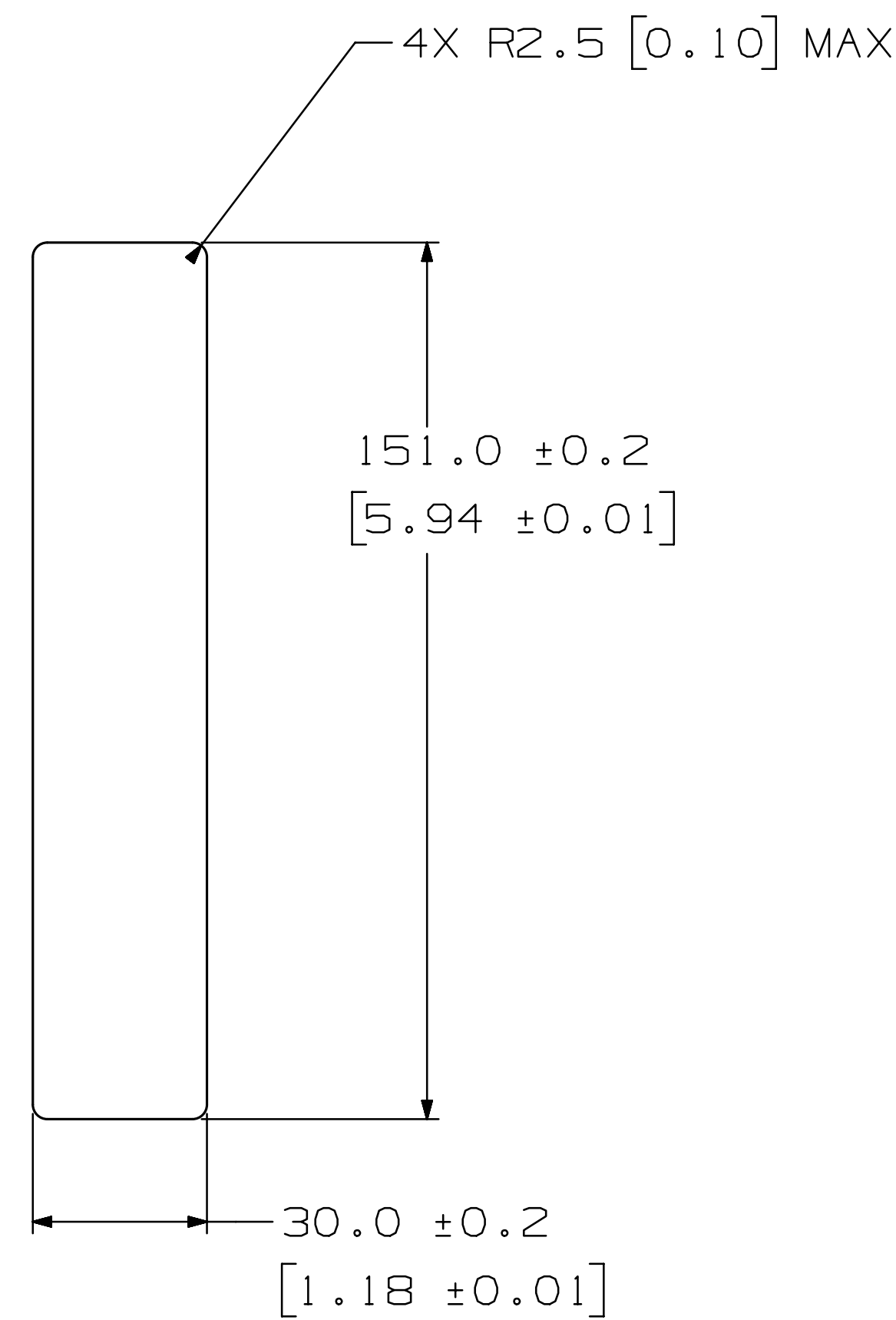
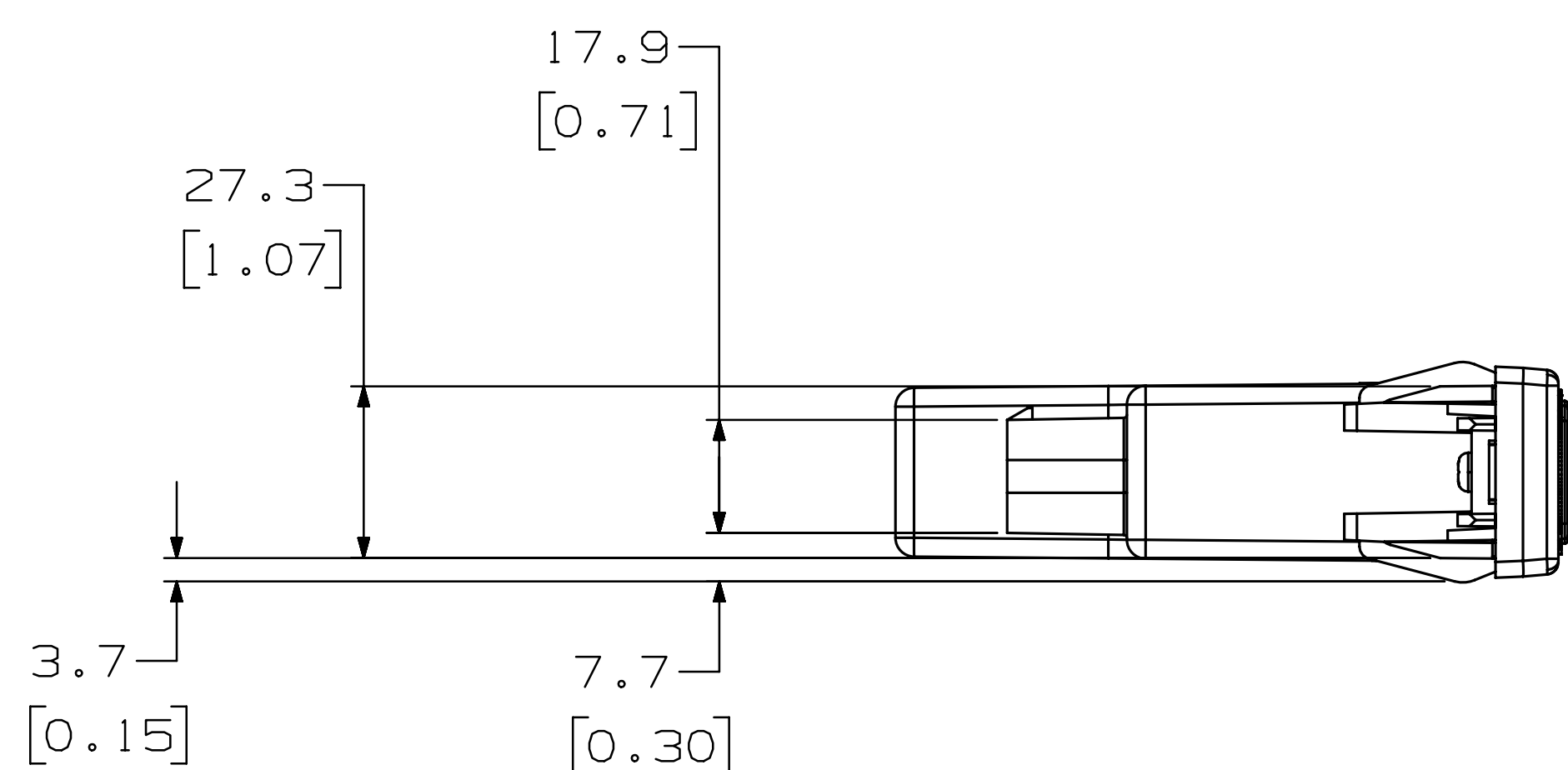
CURRENT STATUS:

RX-Released - EXP

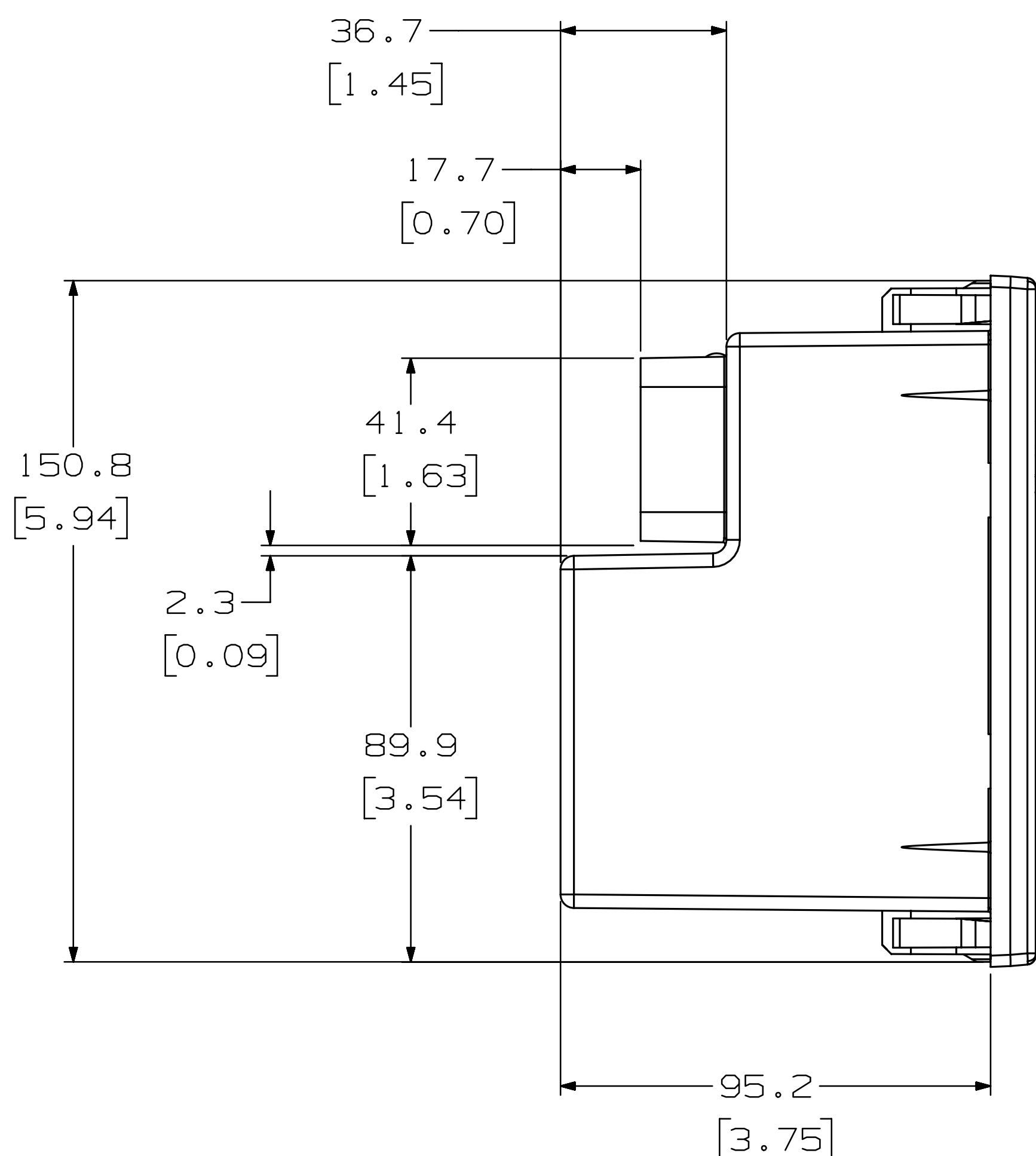
3000/4000 PRODUCT FAMILIES
STRIP PUSH BUTTON SHIFT SELECTOR



TYPICAL INSTALLATION



INSTRUMENT PANEL OR PEDESTAL
OPENING SIZE



DIMENSIONS SHOWN IN [] BRACKETS ARE IN INCHES,
AND FOR REFERENCE ONLY

THESE DIMENSIONS ARE FOR BOTH 3 POSITION AND 6 POSITION SELECTORS

FOR WIRING INFORMATION, SEE SYSTEM SCHEMATIC DRAWING

FOR OPERATING DATA, SEE CONTROL SYSTEM DATA.

SELECTOR SNAPS INTO PLACE-NO FASTENERS REQUIRED

90° CONNECTOR
DIRECTION WITH
RESPECT TO LOCK TAB
12mm CONDUIT

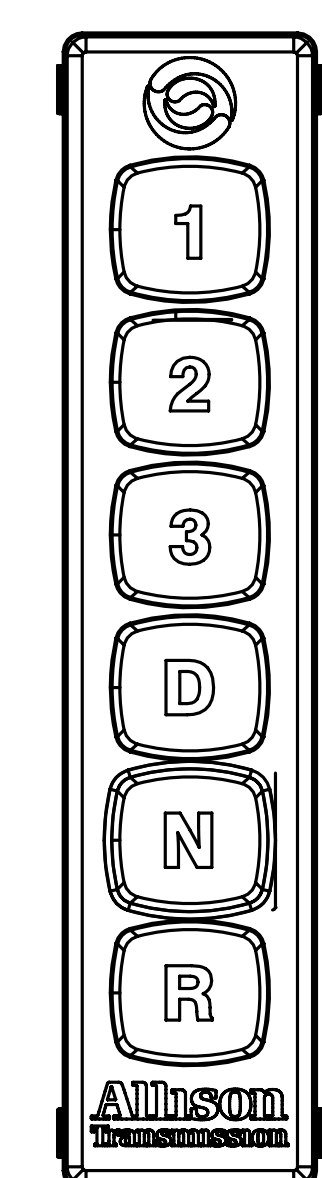
43.8 [1.72]
CONNECTOR FULLY ENGAGED
54.2 [2.13]
CONNECTOR FULLY DISENGAGED

180° CONNECTOR
12mm CONDUIT

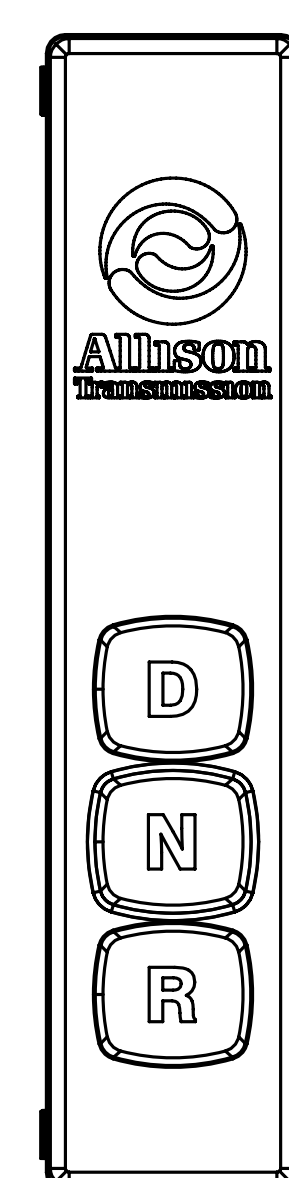
21.0
[0.83]

69.8 [2.75]
CONNECTOR FULLY ENGAGED

80.2 [3.16]
CONNECTOR FULLY DISENGAGED

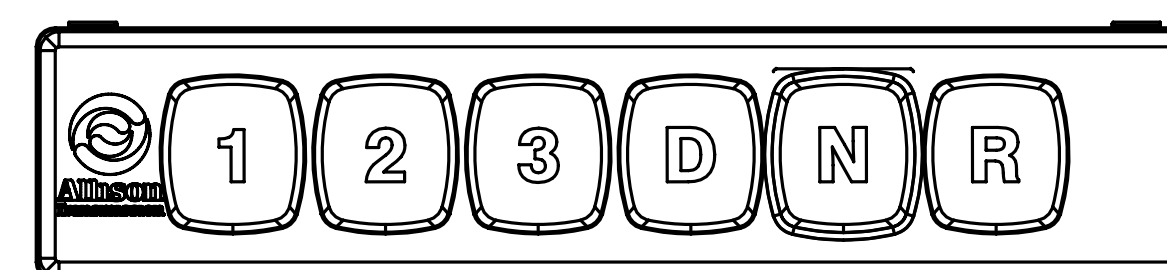


6-POSITION

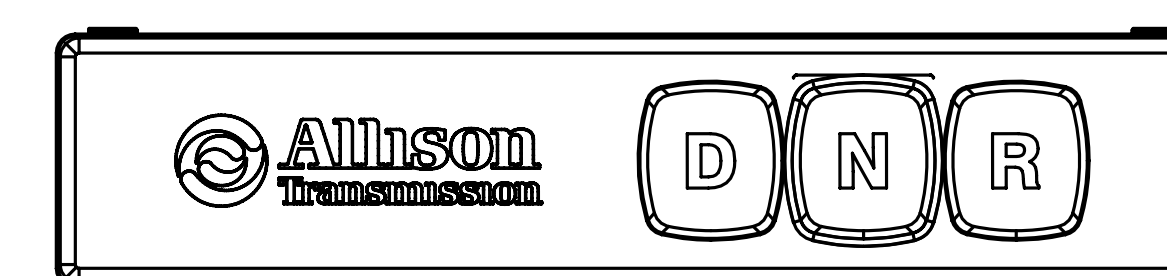


3-POSITION

VERTICAL

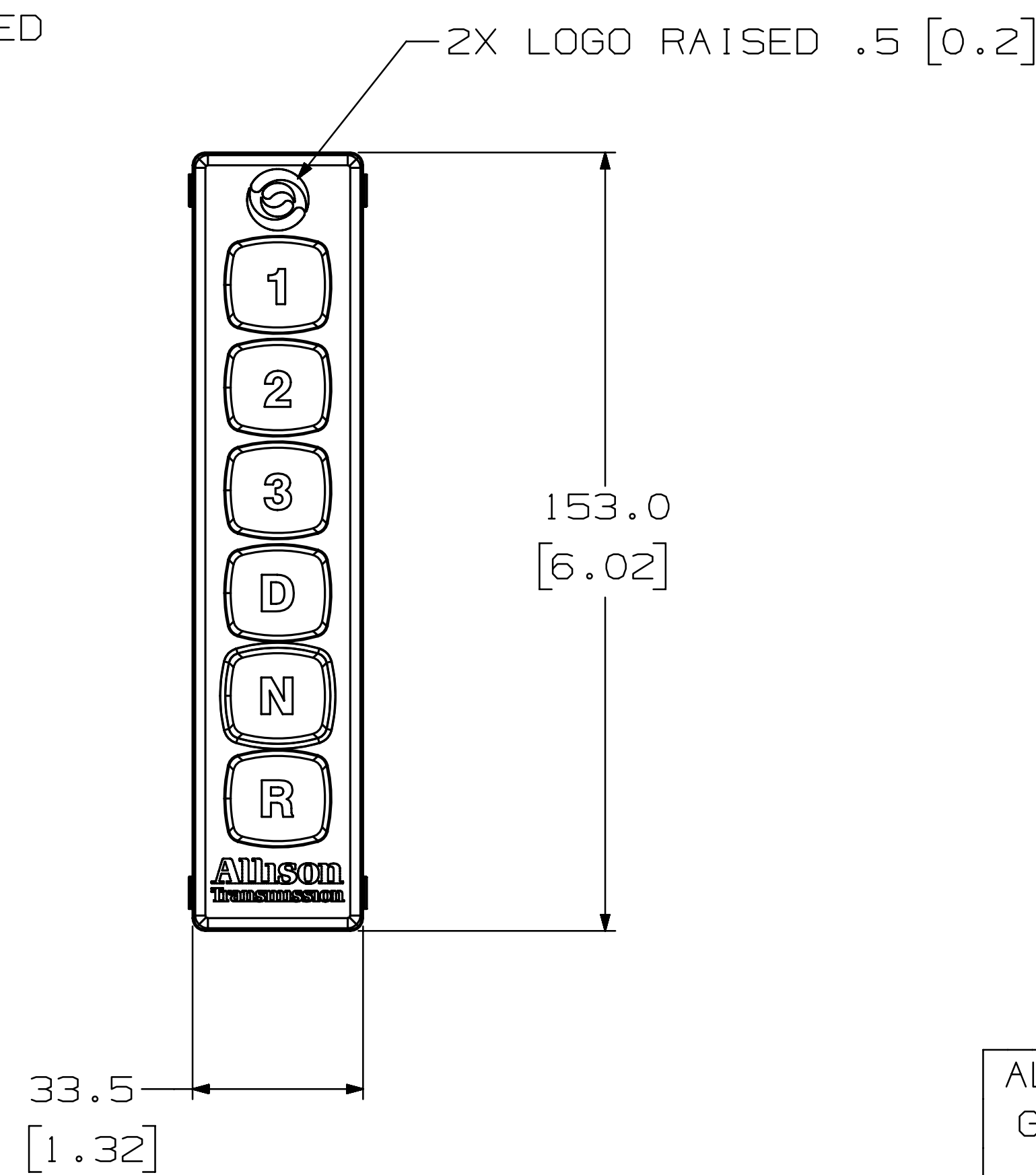


6-POSITION

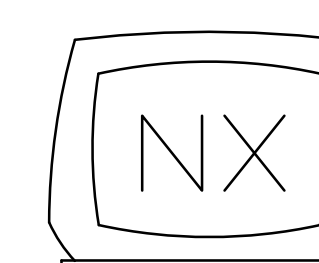


3-POSITION

HORIZONTAL

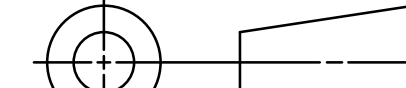


ALLISON 6th
GENERATION
CONTROLS



METRIC

THIRD ANGLE



THE INFORMATION CONTAINED HEREIN IS PROPRIETARY AND THE
PROPERTY OF ALLISON TRANSMISSION, INC AND MAY NOT BE
REPRODUCED, DISCLOSED OR USED FOR ANY PURPOSE OTHER THAN A
QUOTATION TO OR ON ORDER FROM ALLISON TRANSMISSION, INC
WITHOUT THE SPECIFIC WRITTEN AUTHORIZATION OF
ALLISON TRANSMISSION, INC.

FR2

REV	DESCRIPTION	DATE	CHK
1	REVISIONS		
2	DATE 03FE21		
3	CHECKED C. EDMONDS		
4	DATE		
5	APPROVED T. BROWN		
6	DATE		
7	PROJ. ENGR. J. CHATLLE		
8	DATE		
9	APPL. ENGR.		
10	DATE		

INSTR. DWG-SELECTOR, SHIFT,
6TH GEN

MODEL ALLISON 6th GENERATION CONTROLS

SIZE CAGE CODE DWG NO

R 73342 AS07-617

SCALE 1/1 SHEET 5

CURRENT STATUS:
RX-Released - EXP

FR1

DWG. NO.
AS07-617

LTR

SH

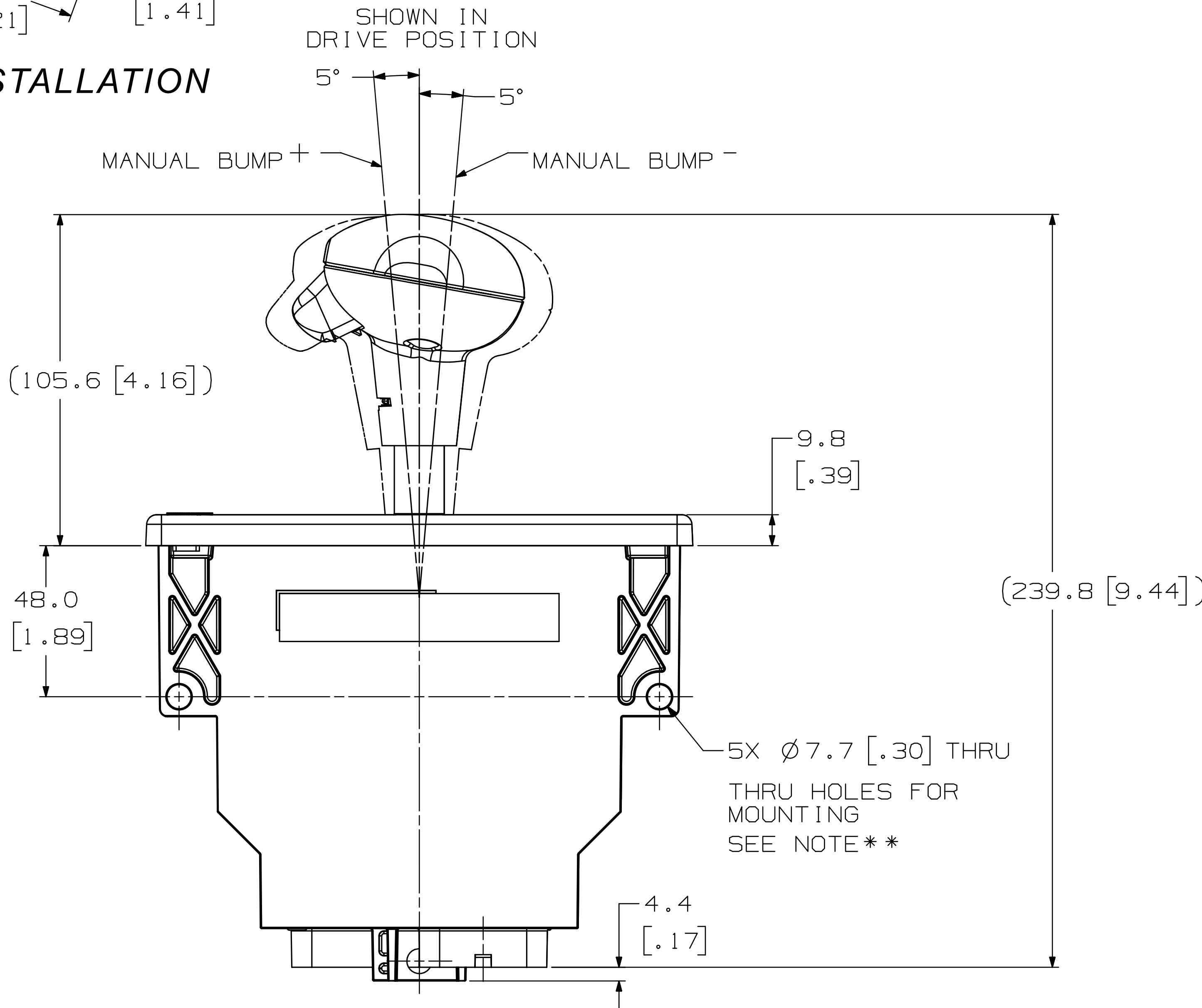
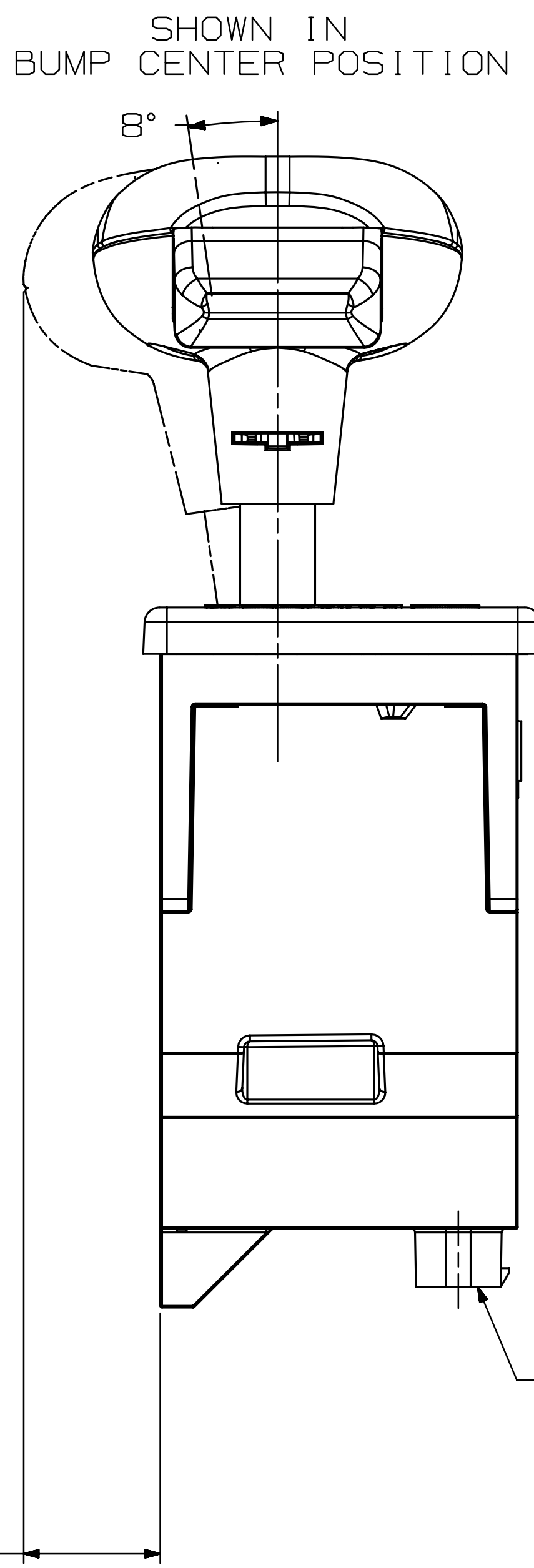
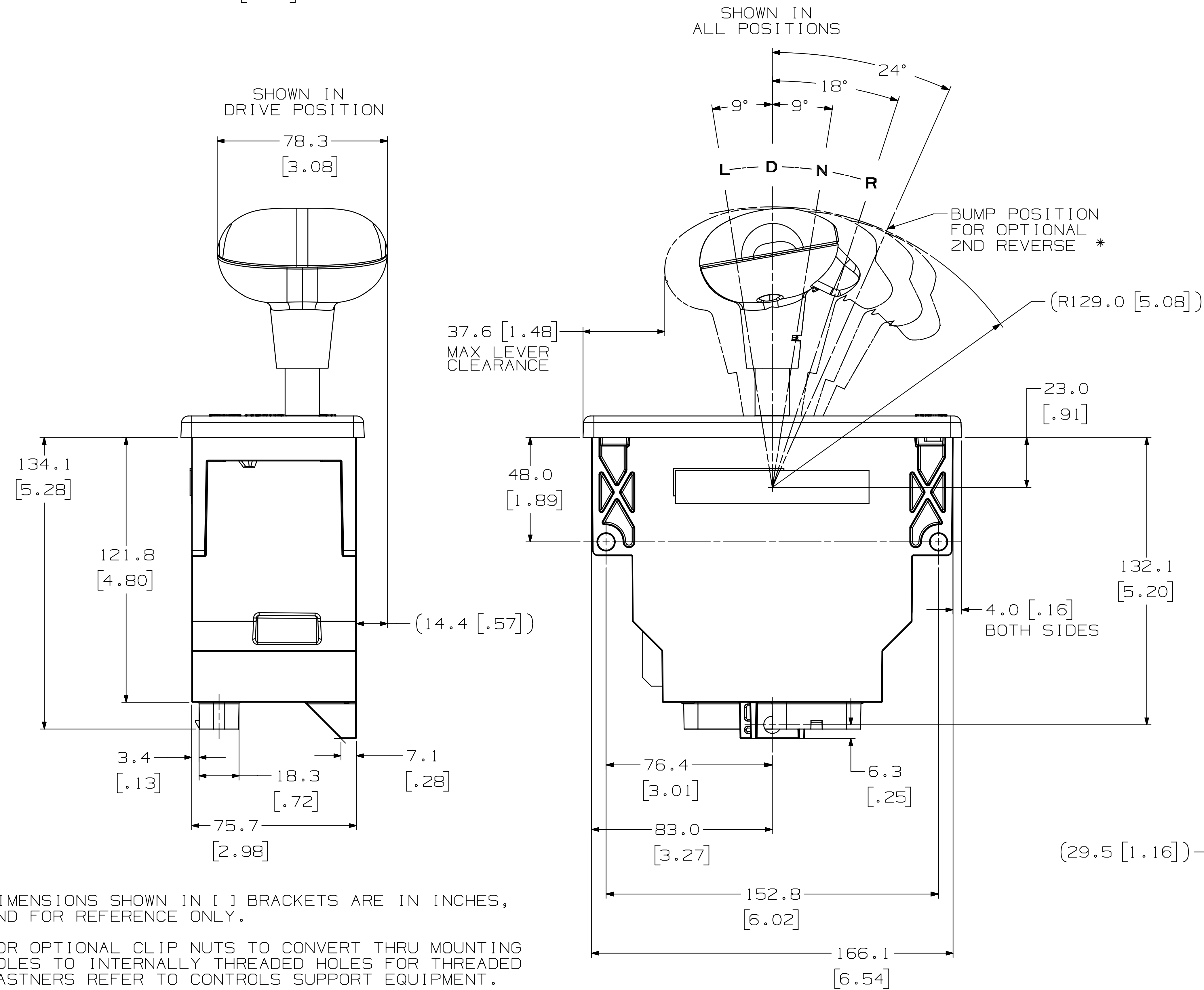
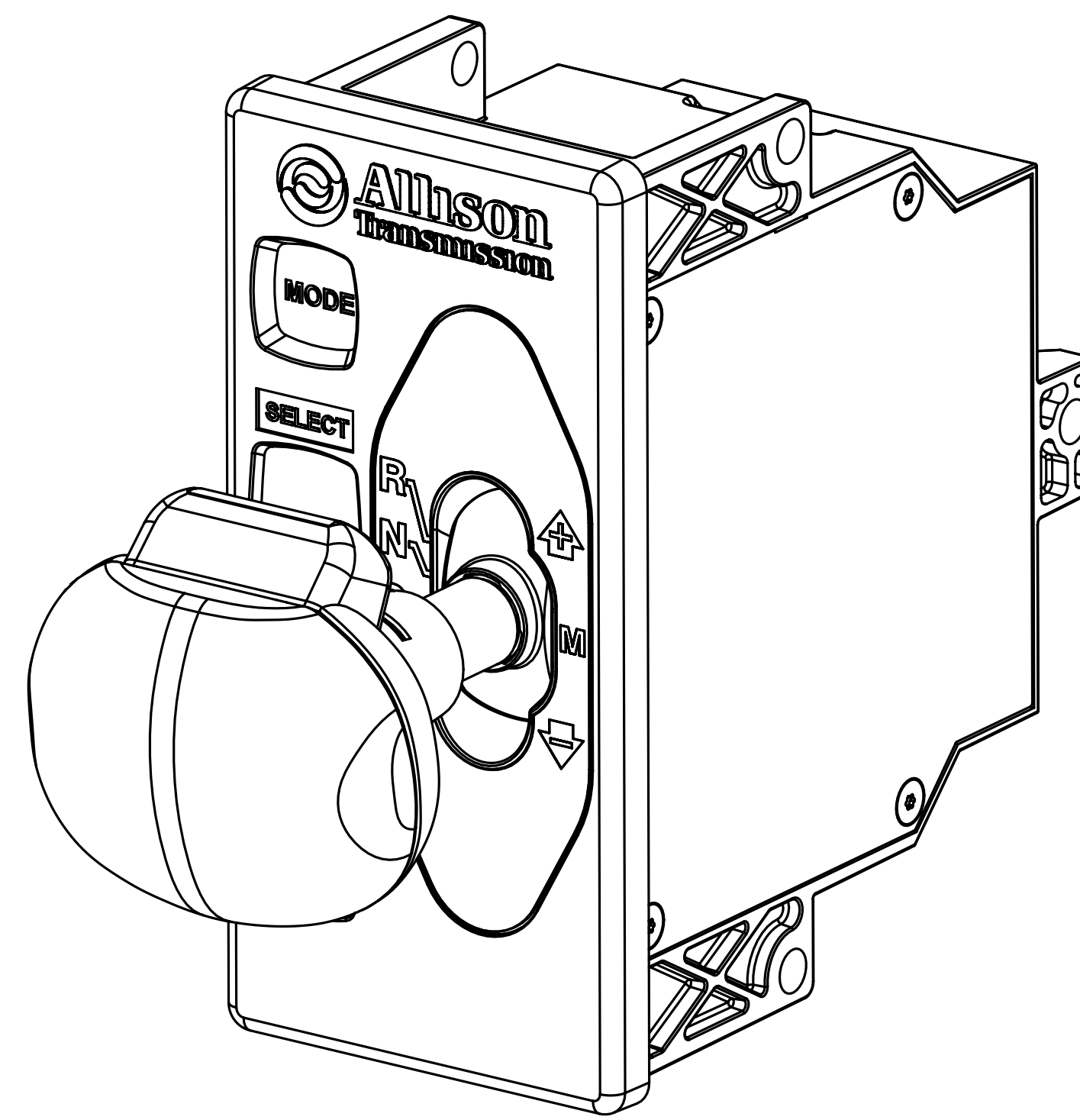
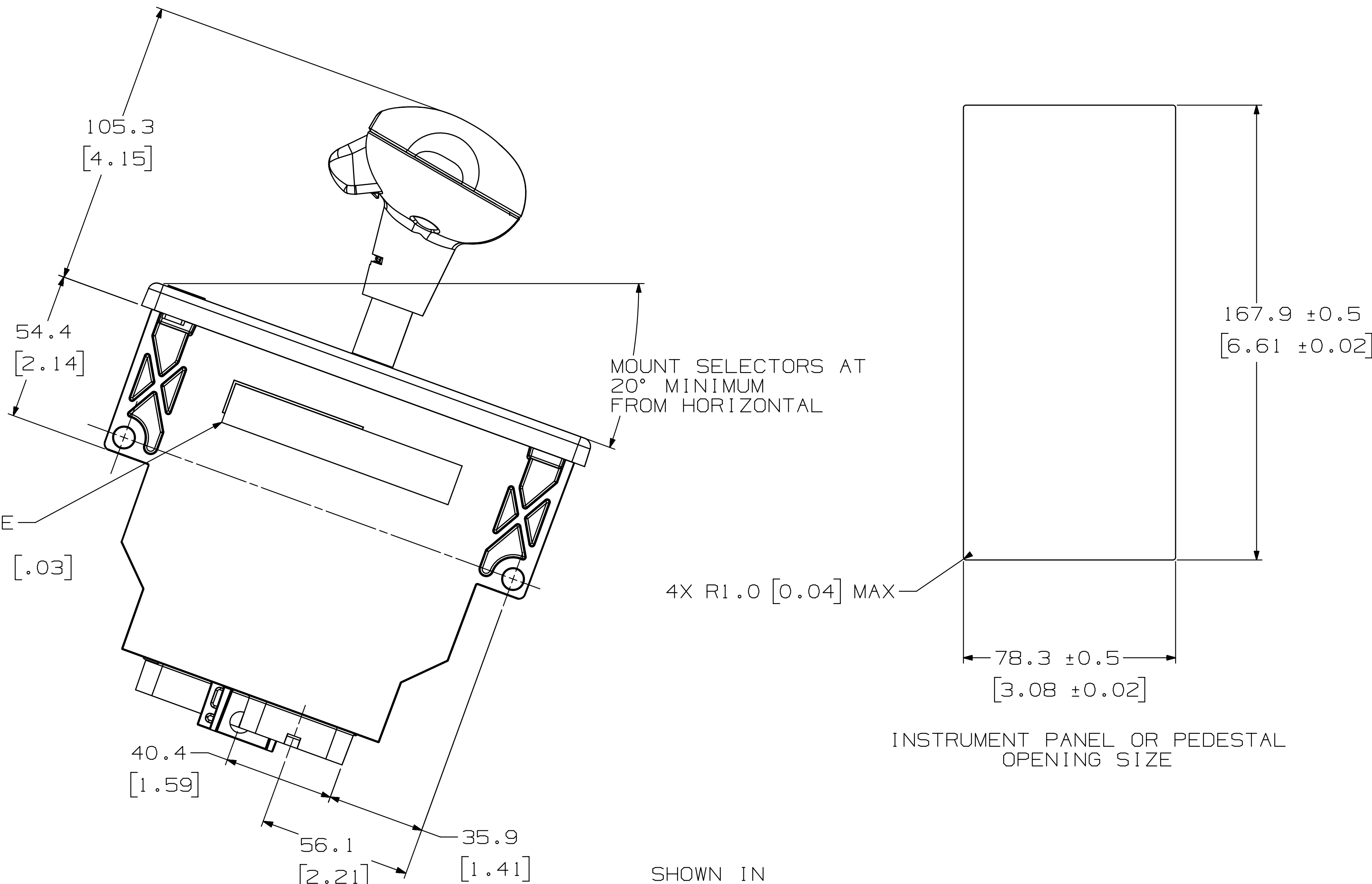
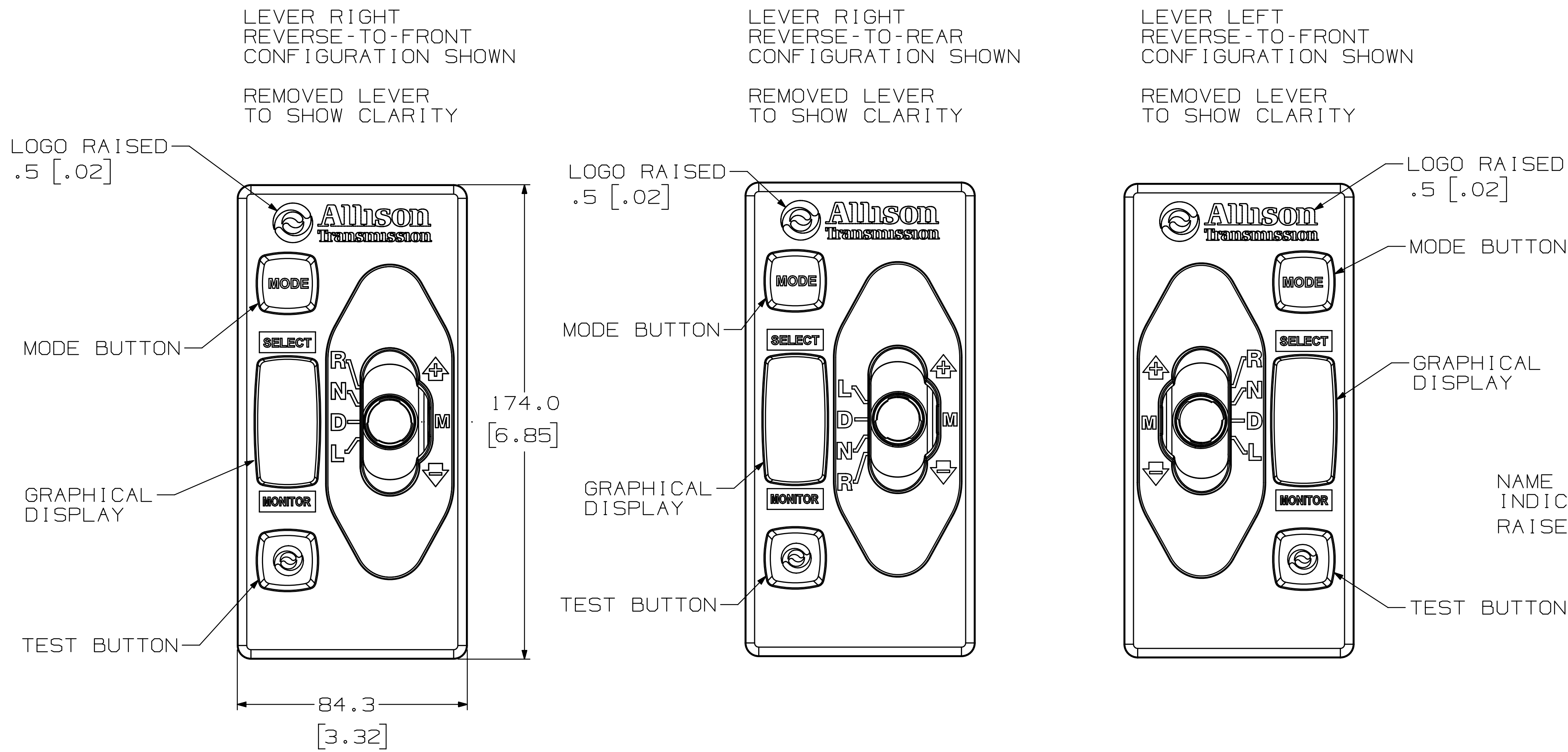
5

DWG
NO
AS07-617

FOR WIRING INFORMATION, SEE SYSTEM SCHEMATIC DRAWINGS

FOR OPERATING SPECIFICATIONS, REFER TO CONTROL SYSTEM DATA.

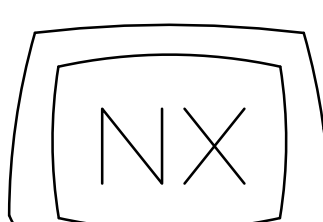
2900/3000/4000 PRODUCT FAMILIES
BUMP LEVER SHIFT SELECTOR



**USE FLANGE-HEAD FASTENERS, OR USE WASHERS UNDER FASTENERS.
TORQUE TO 22.5 -3.0 N·m [20-26 IN·LB].

IF BOLTING THROUGH MOUNTING HOLES ON OPPOSITE SIDES OF LEVER,
USE 63.5 mm [2.5in] METAL SPACER OVER BOLT SHAFT, BETWEEN HOLES.
TORQUE TO 3.0-4.0 N·m [27-36 IN·LB]

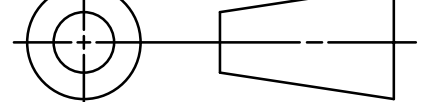
* 2ND REVERSE IS ONLY AVAILABLE WITH SELECT MODELS.
REFER TO TECHNICAL DOCUMENT (TD) 191.



FR2	REV	DESCRIPTION	DATE	DWCH
REVISIONS				
DRAWN R. HIGGINS				
DATE 03FE21				
CHECKED C. EDMONDS				
DATE				
APPROVED				
DATE				
PROJ. ENGR. J. CHATLLE				
DATE				
APPL. ENGR.				
DATE				

METRIC

THIRD ANGLE



THE INFORMATION CONTAINED HEREIN IS PROPRIETARY AND THE
PROPERTY OF ALLISON TRANSMISSION, INC AND MAY NOT BE
REPRODUCED, DISCLOSED OR USED FOR ANY PURPOSE OTHER THAN A
QUOTATION TO OR ON ORDER FROM ALLISON TRANSMISSION, INC
WITHOUT THE SPECIFIC WRITTEN AUTHORIZATION OF
ALLISON TRANSMISSION, INC.

FR1

DWG. NO.

AS07-617

LTR

SH

6

MODEL ALLISON 6th GENERATION CONTROLS

SIZE CASE CODE DWG NO

R 73342

AS07-617

SCALE 1/1

SHEET 6

CURRENT STATUS:

RX-Released - EXP

DWG NO
AS07-617